

พม่าดา

พระนิพนธ์ใน สมเด็จพระเจ้าฟ้าบรมโพธิ์บรมพิตรสุริยวงษ์

ส่วนขึ้น ท่อน ๑

7

14

20

26

30

36

43

51

58

65

69

ចំរើន
Clarinet in B \flat 2



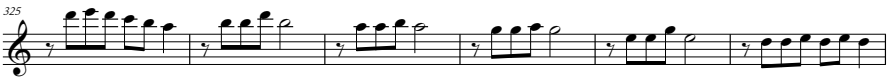
ចំរើន
Clarinet in B♭ 2

Musical score for Clarinet in B♭ 2, measures 153-209. The score is written in treble clef with a key signature of one flat (B♭). The music consists of ten staves of notation. Measure numbers 153, 158, 163, 168, 174, 179, 184, 189, 194, 200, 205, and 209 are indicated at the beginning of their respective staves. The notation includes various rhythmic values, slurs, and accents.

ចំរើន
Clarinet in B \flat 2

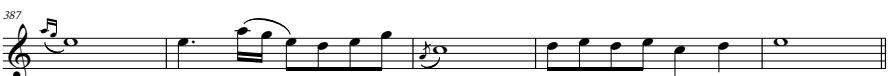
Musical score for Clarinet in B \flat 2, measures 213-277. The score is written in treble clef with a key signature of one flat (B \flat). The music consists of ten staves of notation. Measure 213 starts with a quarter rest followed by a series of eighth and quarter notes. Measure 218 features a series of eighth notes with slurs. Measure 225 includes a first ending bracket over measures 225-226 and a second ending bracket over measures 227-228. Measure 231 has a quarter rest followed by eighth notes. Measure 237 has a quarter rest followed by eighth notes. Measure 242 starts with an eighth rest followed by eighth notes. Measure 246 has an eighth rest followed by eighth notes. Measure 251 has eighth notes with slurs. Measure 257 has eighth notes with slurs. Measure 263 has eighth notes with slurs. Measure 268 has eighth notes with slurs. Measure 273 has eighth notes with slurs. Measure 277 ends with a quarter rest followed by two whole rests.

តារាង
Clarinet in B \flat 2



ចំរើន
Clarinet in B \flat 2

6



ພມ່າຕາ
Clarinet in B \flat 2

ສາມອັນ ກ່ອນ ພ

6

11

16

21

26

31

35

39

44

พม่าตา
Clarinet in B \flat 2

ส่วนอื่น ท่อน ๓

5

10

15

20

26

32

36

41

พม่าตา
Clarinet in B \flat 2

ส่วนขึ้น ท่อน ๔

5

10

15

19

23

28

33

37

42

พม่าตา
Clarinet in B \flat 2

ส่วนขึ้น ท่อน ๔

5

10

15

20

26

31

36

41

ພມ່າຕາ
Clarinet in B \flat 2

11

ສ່ວນ ກ່ອນ ໑

7

12

16

21

25

29

35

42

47

51

56

ចតុរាជ
Clarinet in B♭ 2

61

68

75

82

87

92

99

104

110

115

120

124

The image shows a musical score for Clarinet in B♭ 2, consisting of ten staves of music. The score is written in treble clef with a key signature of one flat (B♭). The measures are numbered 61, 68, 75, 82, 87, 92, 99, 104, 110, 115, 120, and 124. The music features various rhythmic patterns, including eighth and sixteenth notes, and rests. There are first and second endings marked with '1.' and '2.' above the staff lines. The notation includes slurs, ties, and dynamic markings.

ចំពោះ
Clarinete ប្រភេទ Bb 2



តុរាវ
Clarinet in B \flat 2



พม่าตา
Clarinet in B \flat 2

สองชั้น ร้อย ๒

4

9

14

18

สองชั้น ร้อย ๓

5

10

14

19

พม่าตา
Clarinete in B \flat 2

สองชั้น ร้อย ๔



สองชั้น ร้อย ๔



ພູມາຕາ
Clarinet in B♭ 2

ສິມສອນ ກຸມ ๑

5

9

16

23

29

36

41

46

53

58

63

ចំរើន
Clarinet in B \flat 2



រតនា
Clarinet in B♭ 2



ພມ່າຕາ
Clarinet in B \flat 2

ສິ້ນຜົວ ກ່ອນ ໒



ສິ້ນຜົວ ກ່ອນ ໓



ສິ້ນຜົວ ກ່ອນ ໔



ສິ້ນຜົວ ກ່ອນ ໔

